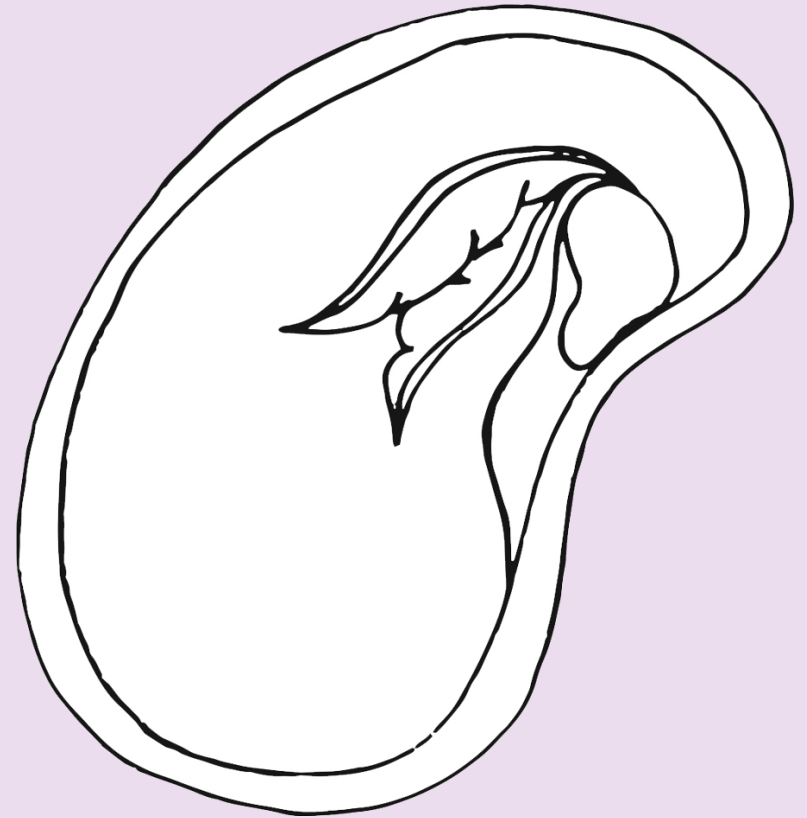
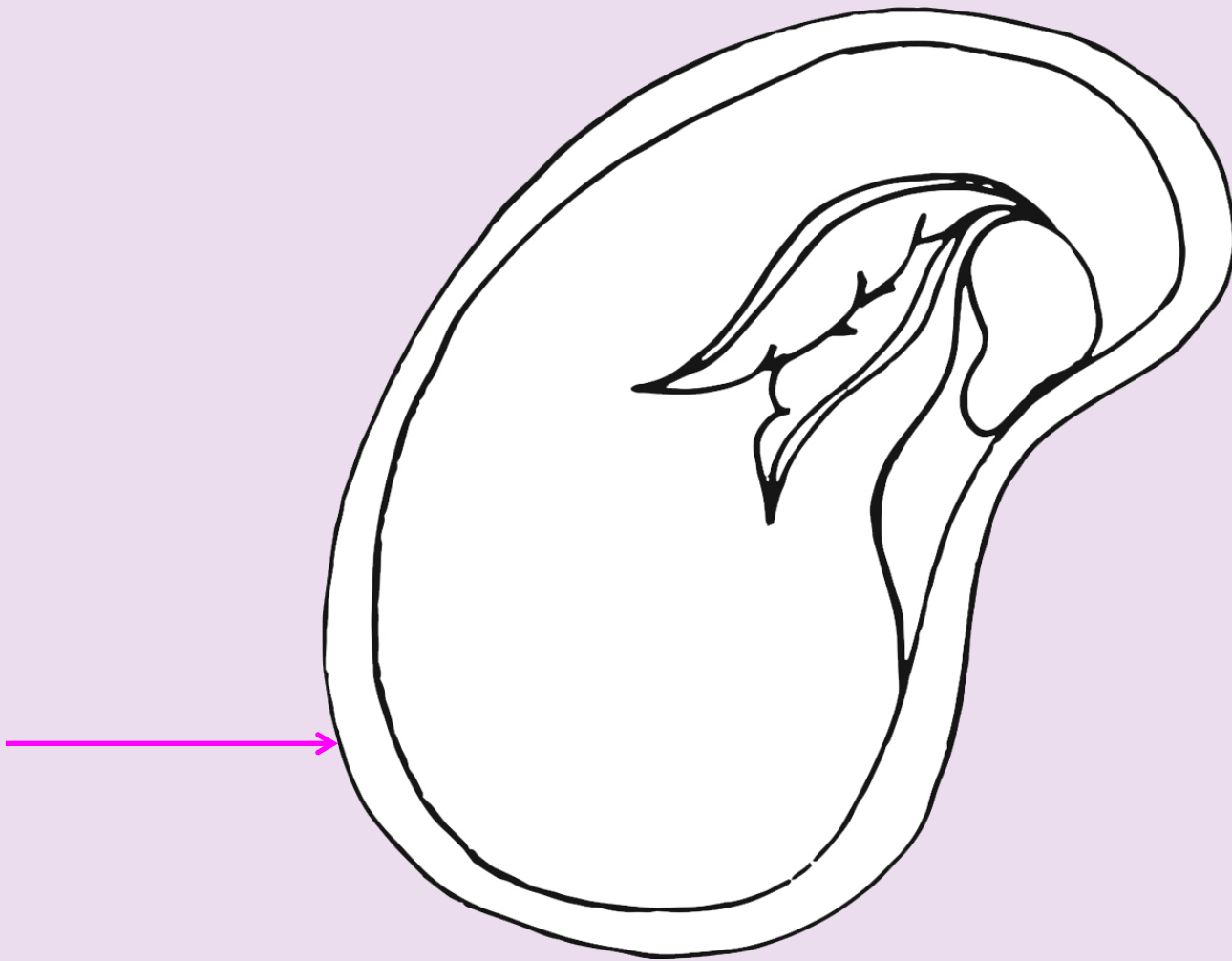


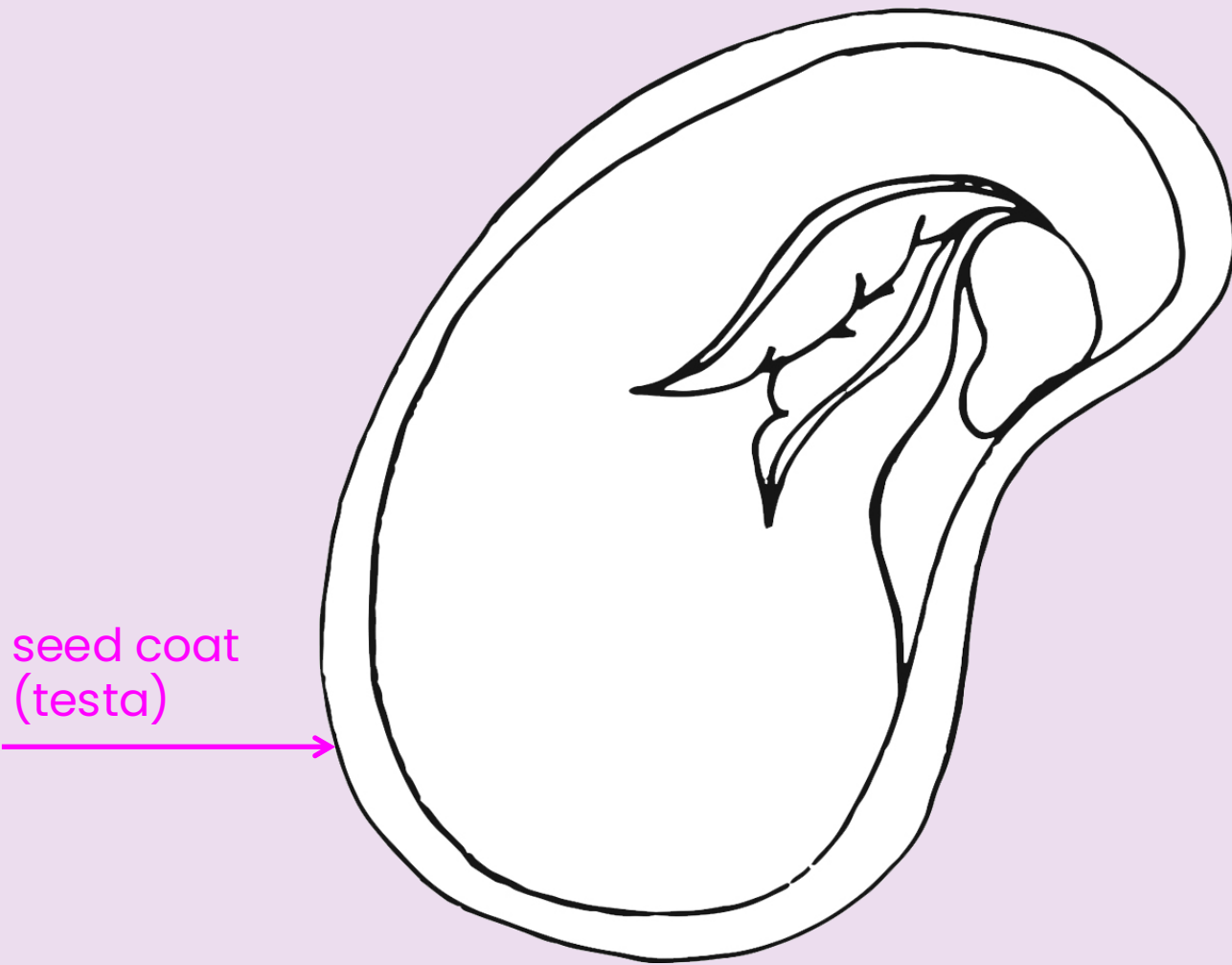


Parts of a Seed

**Within each seed
is almost
everything
needed to make
a new plant.**

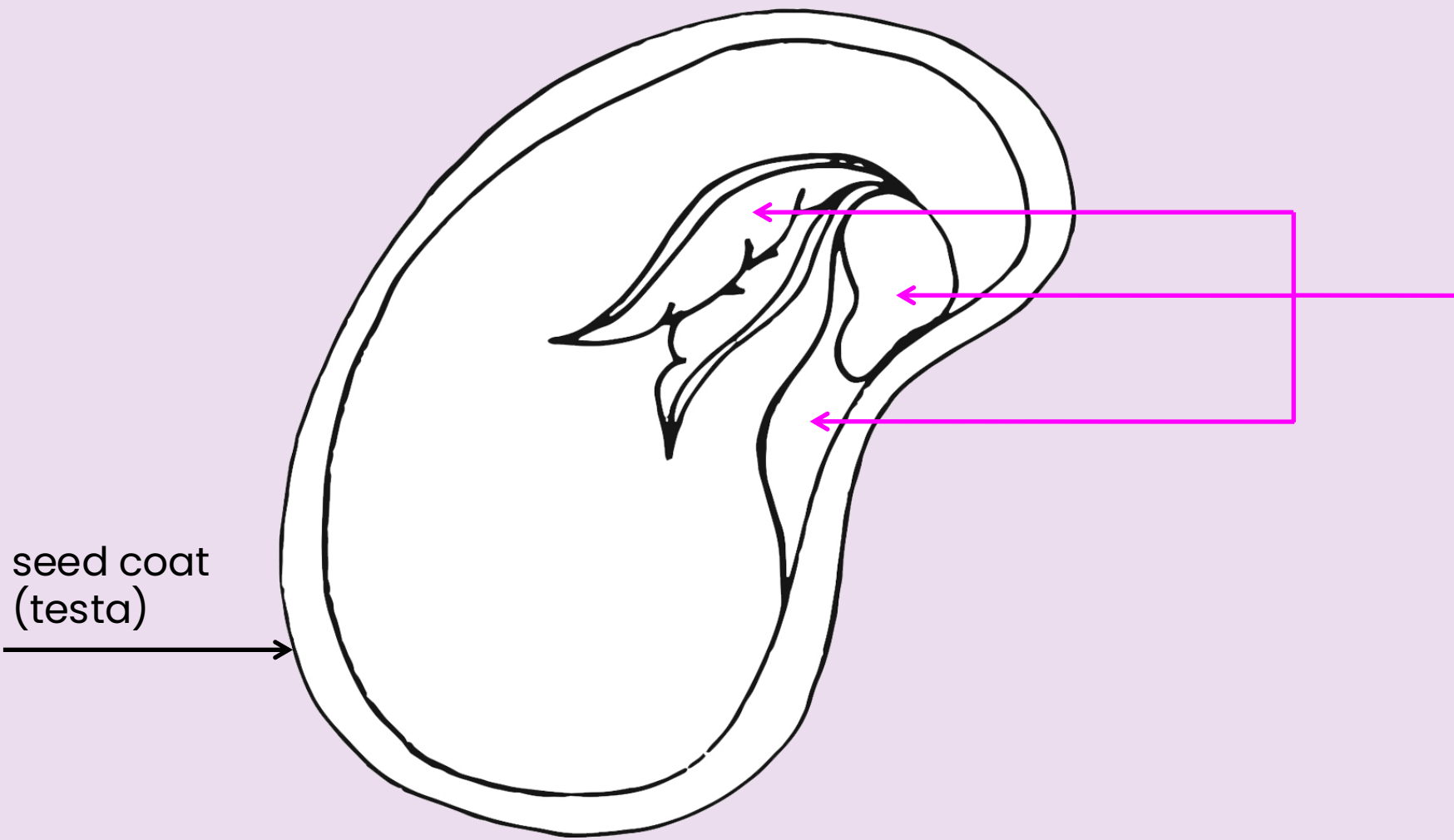




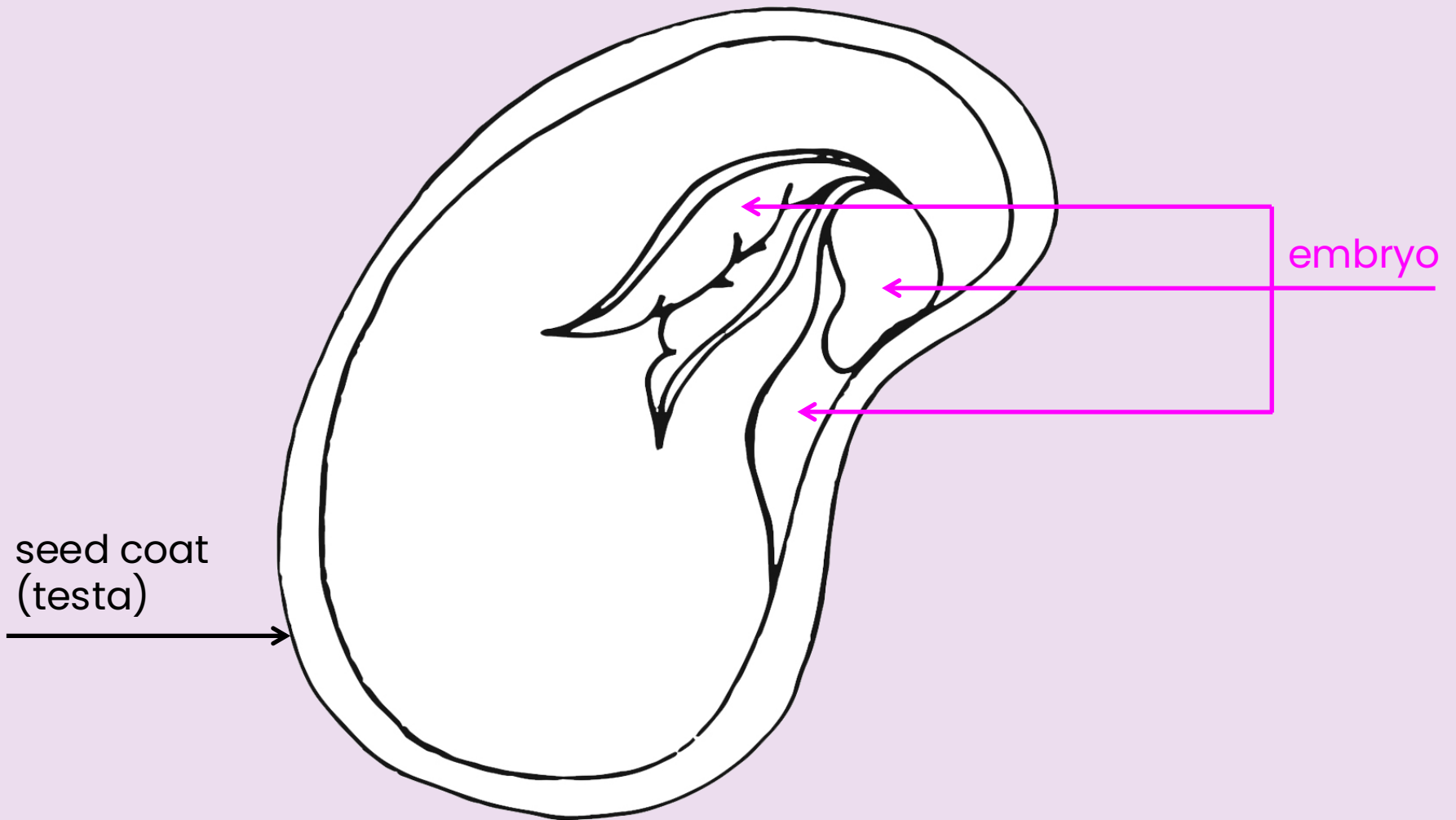


seed coat
(testa)

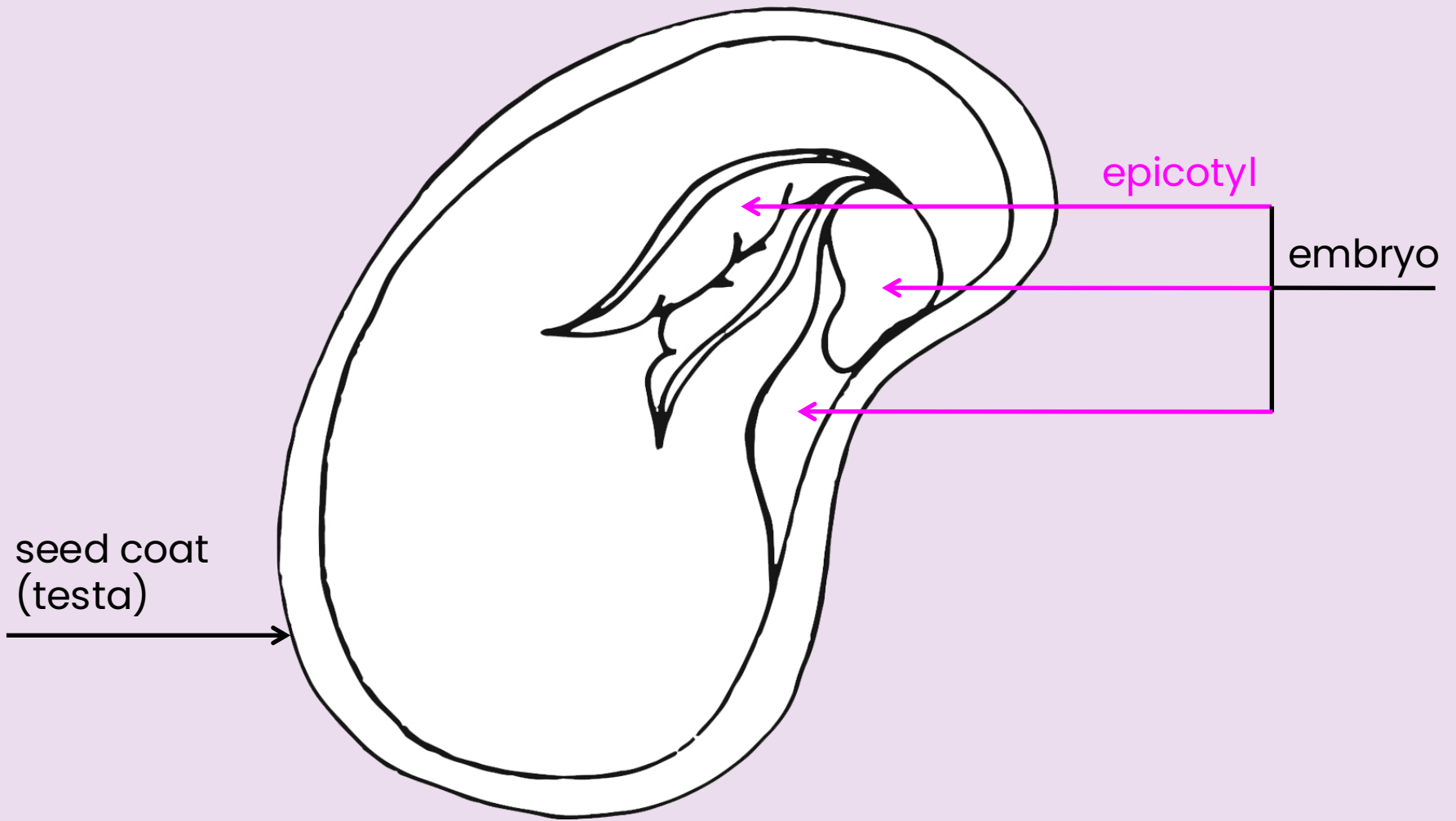
The **seed coat** is the protective outer layer of a seed.
It is also called a **testa**.



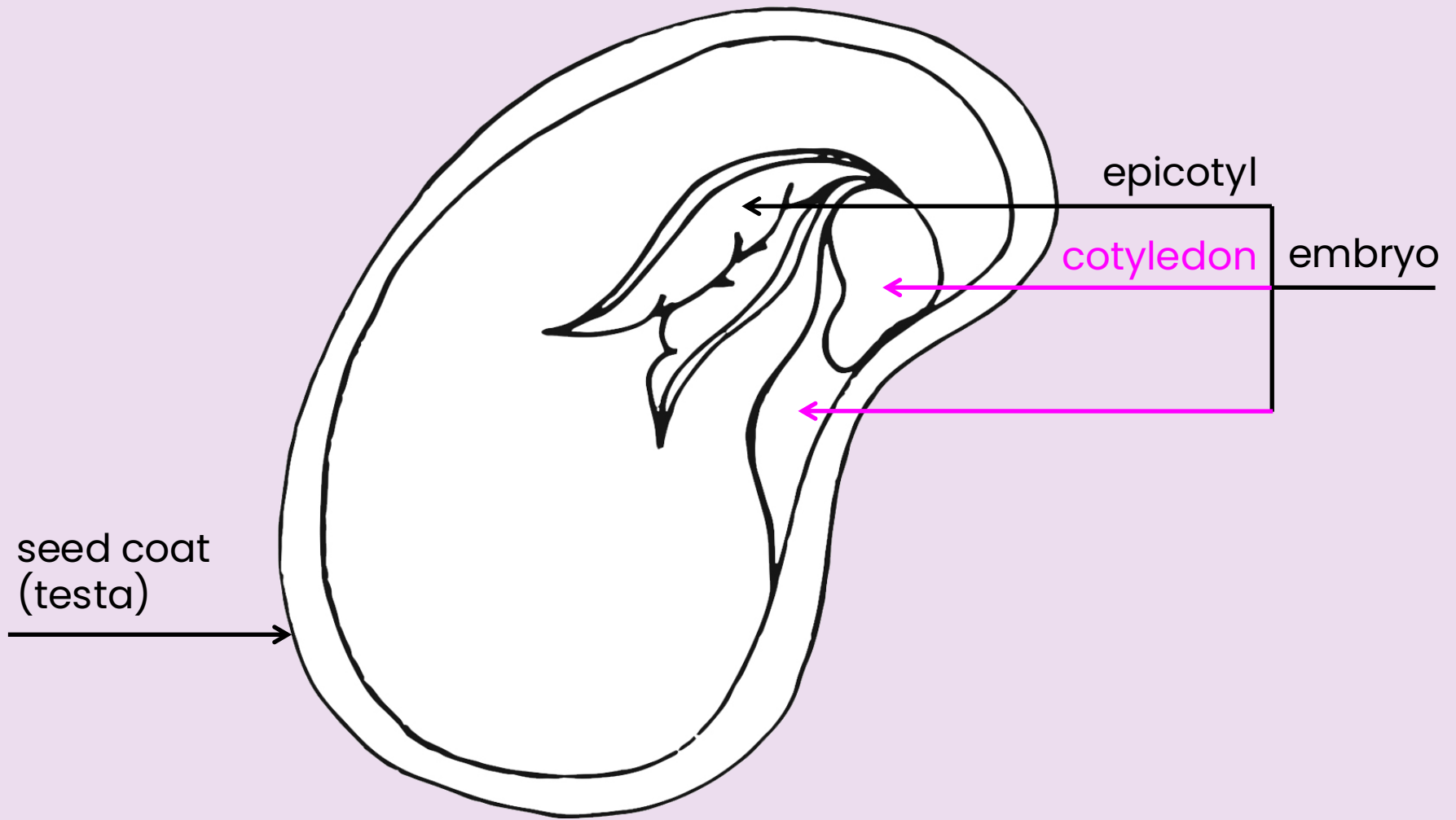
seed coat
(testa)



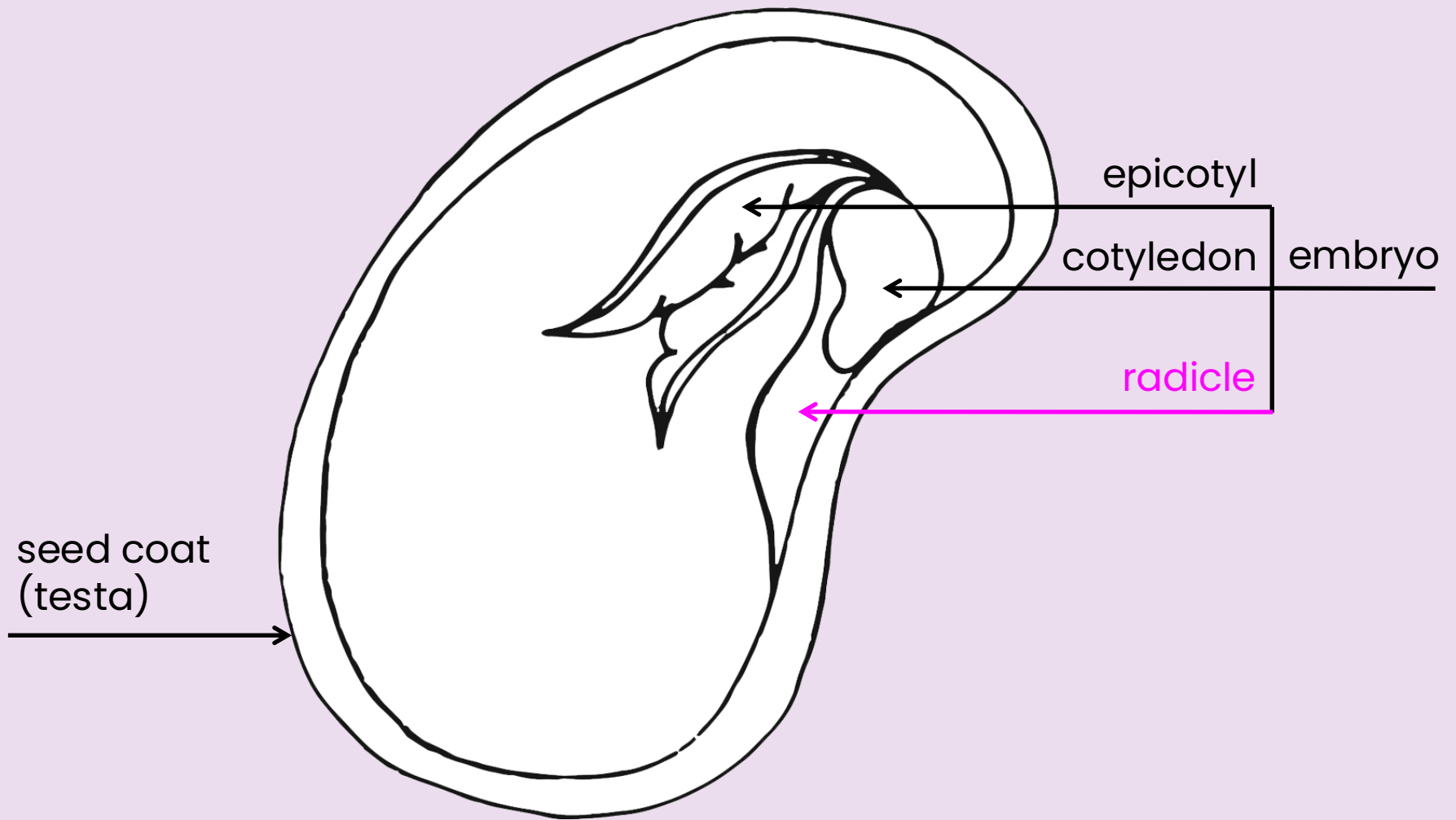
The **embryo** is the part of the seed that contains all the parts necessary to develop into a new plant.



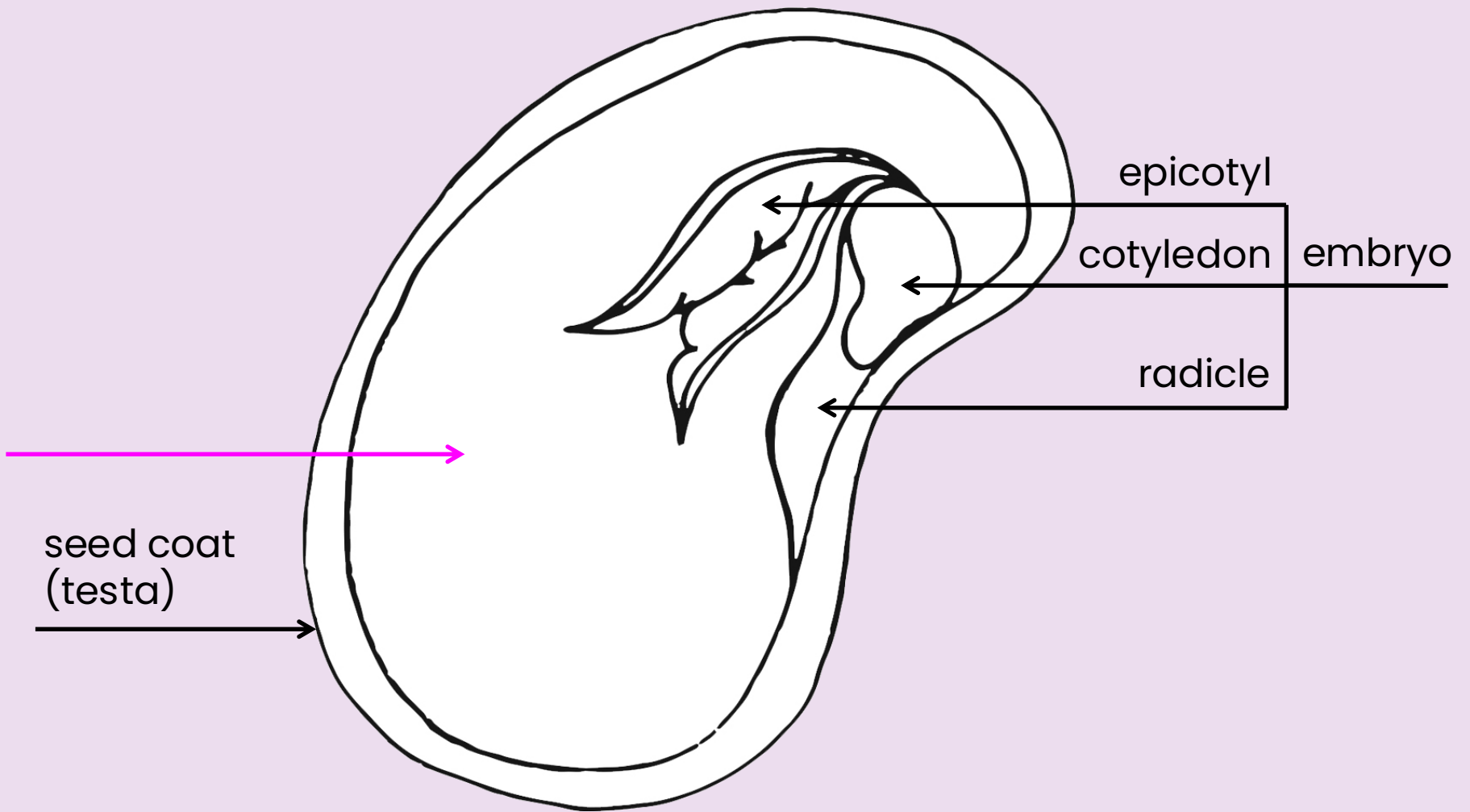
The **epicotyl** is the part of the embryo that becomes the shoot or stem.

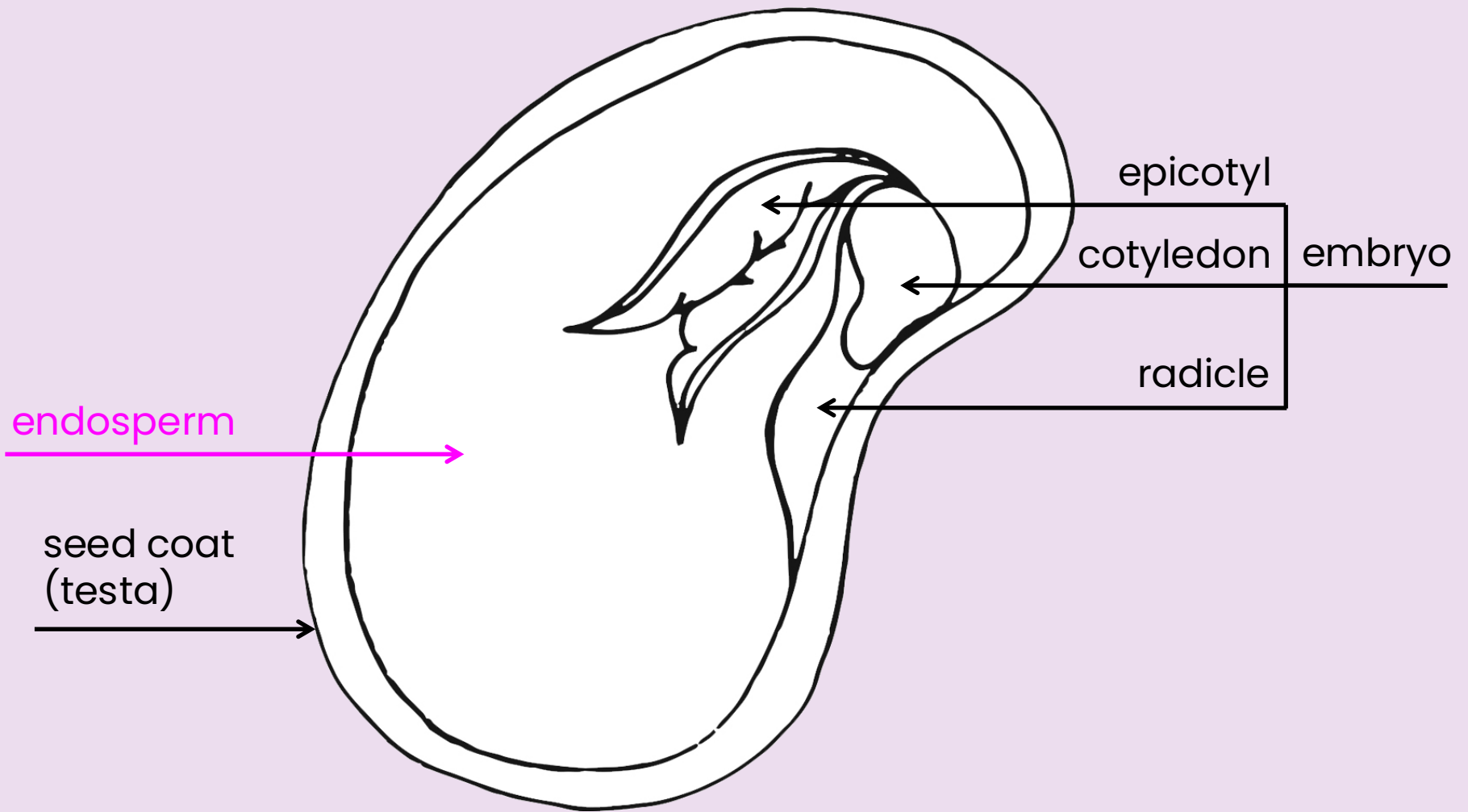


The **cotyledon** is also known as the seed leaf and is part of the embryo.



The **radicle** is the part of the embryo that becomes the roots.





The **endosperm** is the part of the seed that contains the nutrients needed by the embryo to develop into a new plant.

