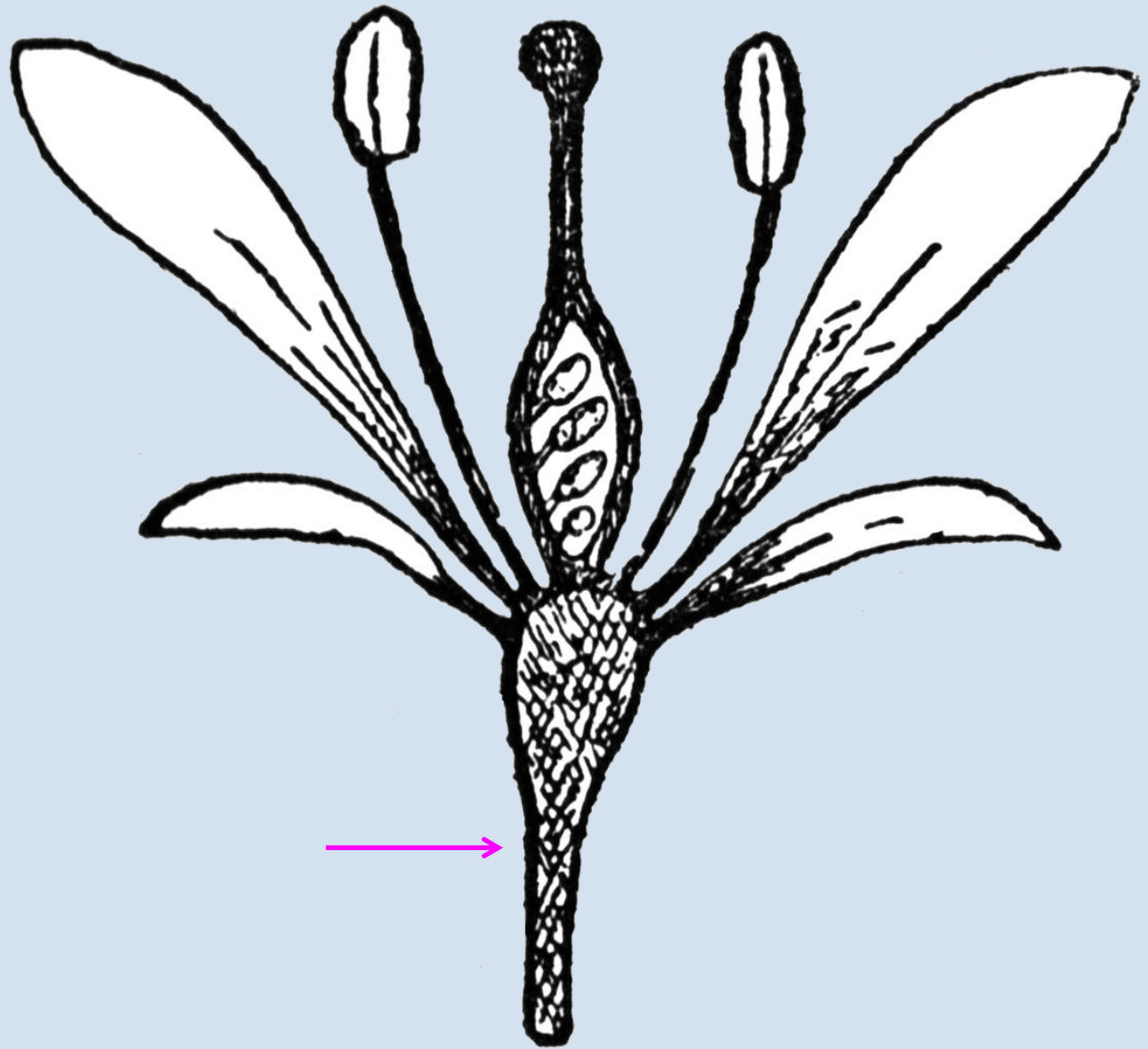
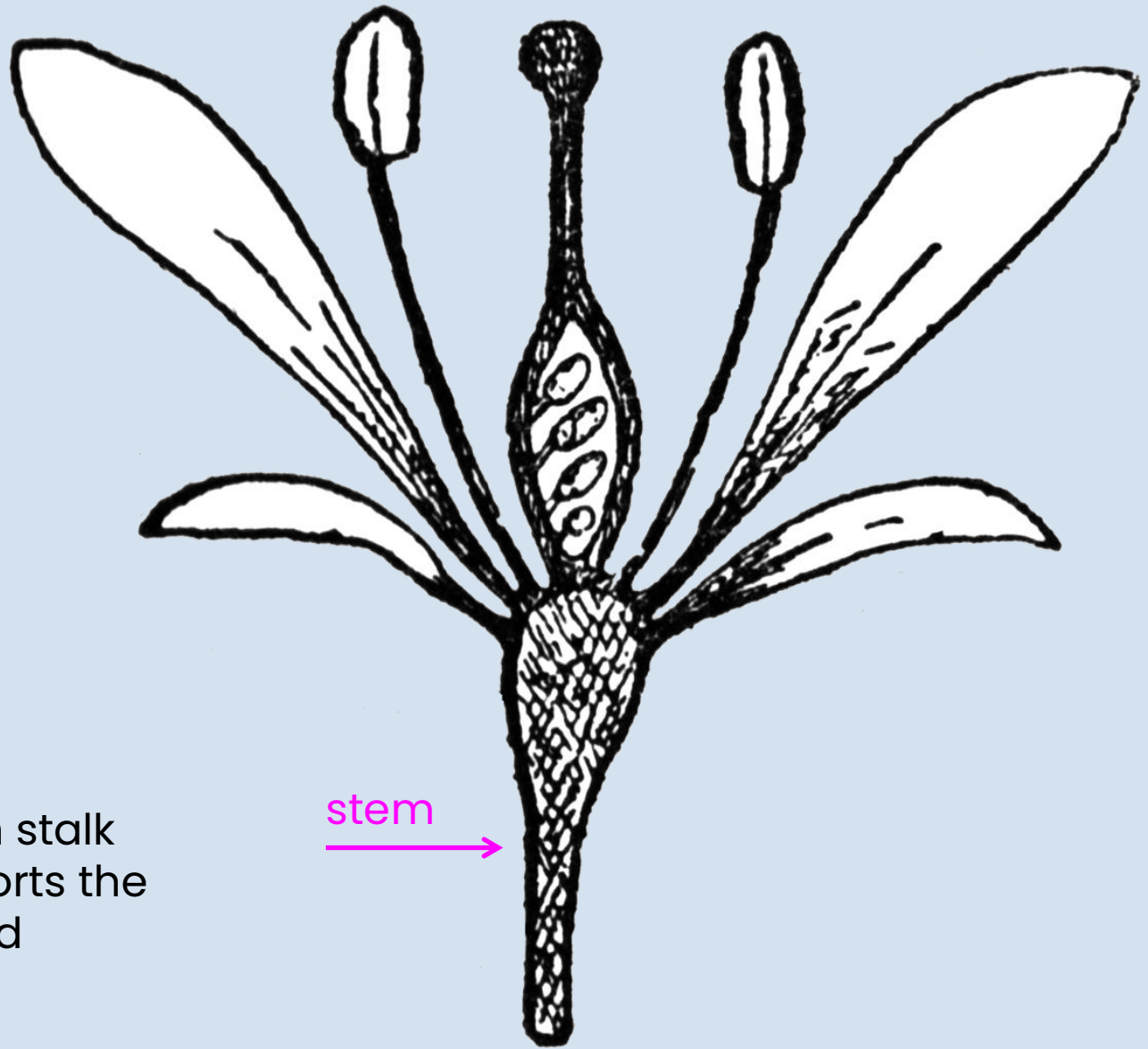


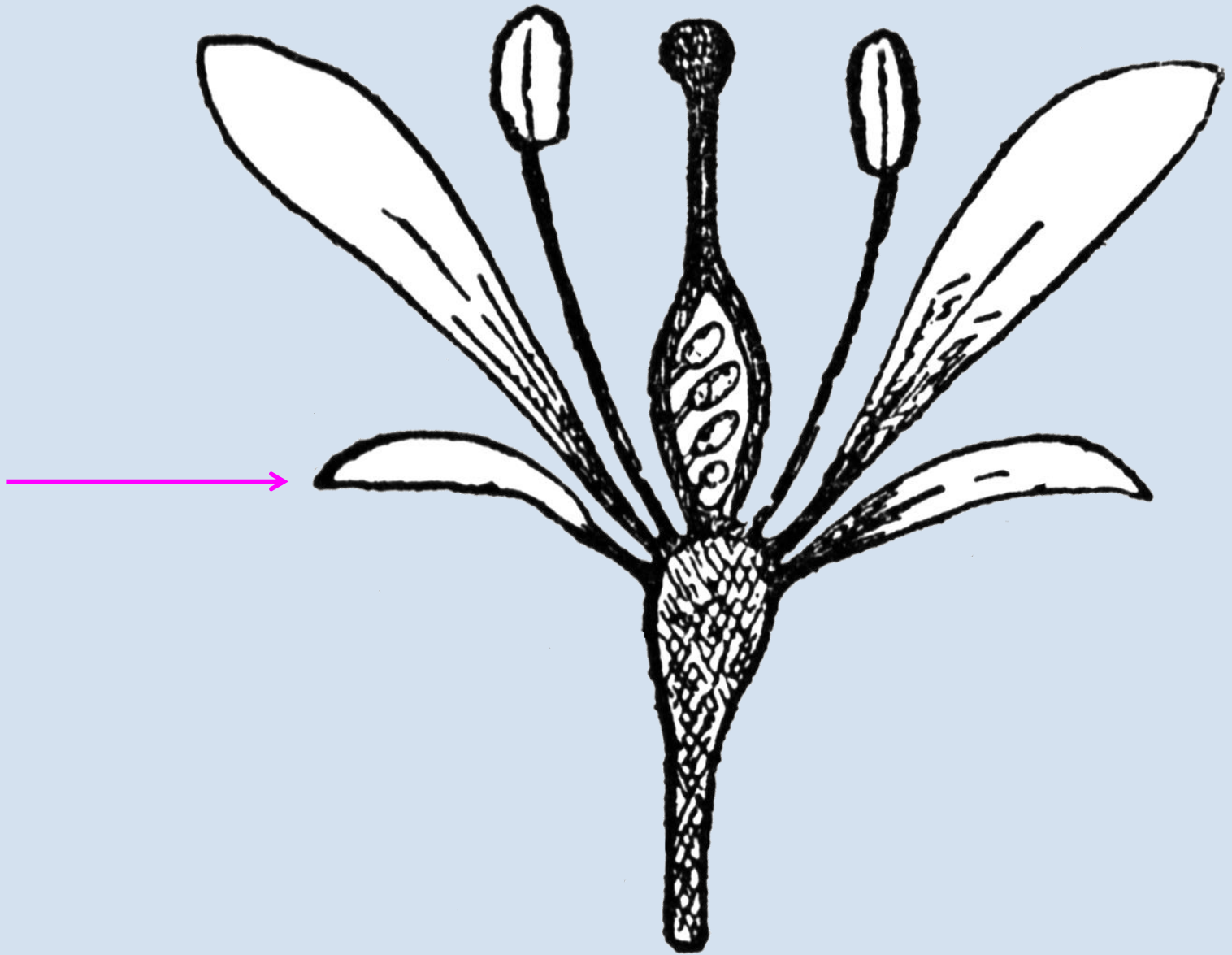


# Parts of a Wildflower

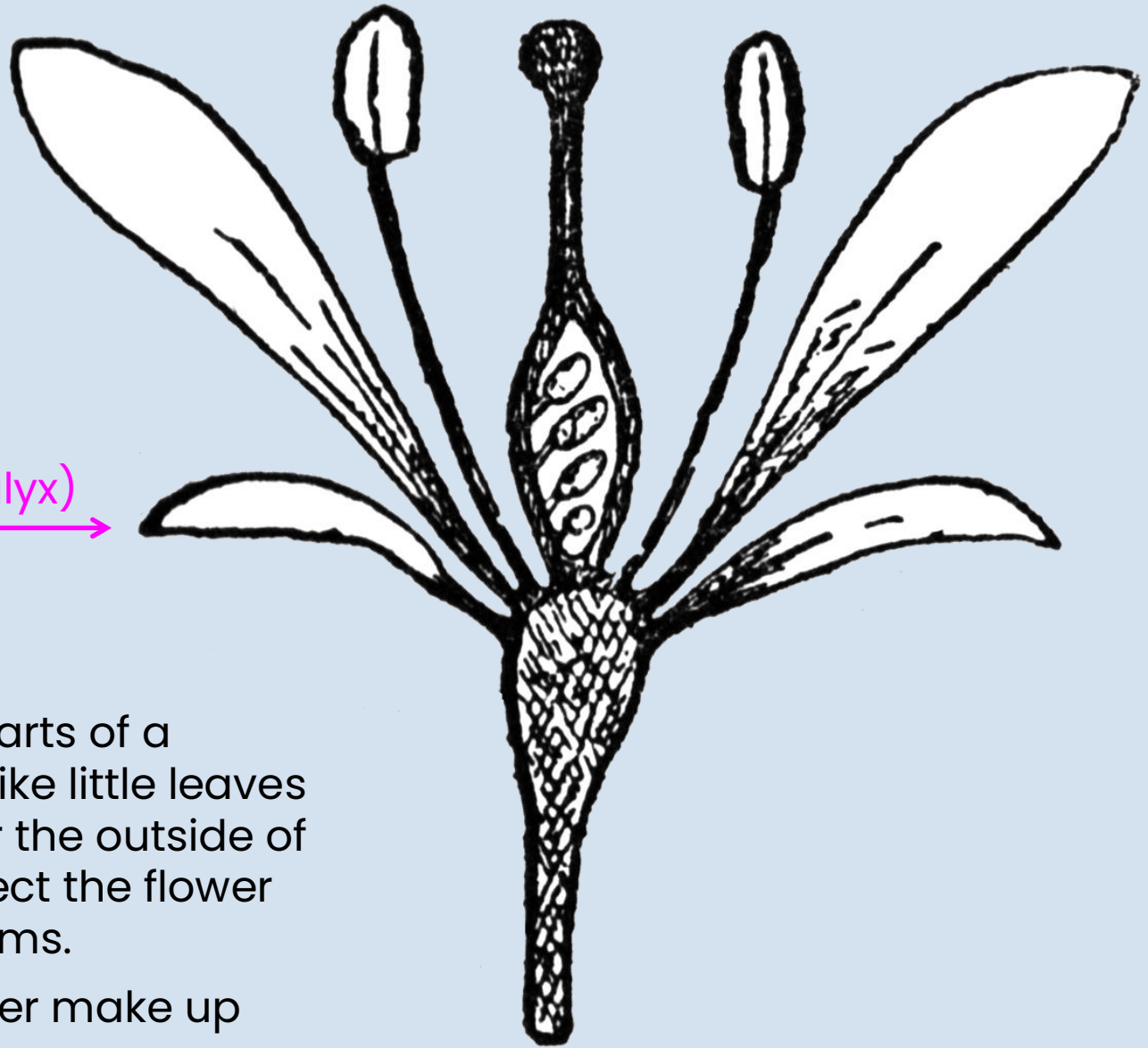




The **stem** is the main stalk of a plant that supports the leaves, branches and flowers.

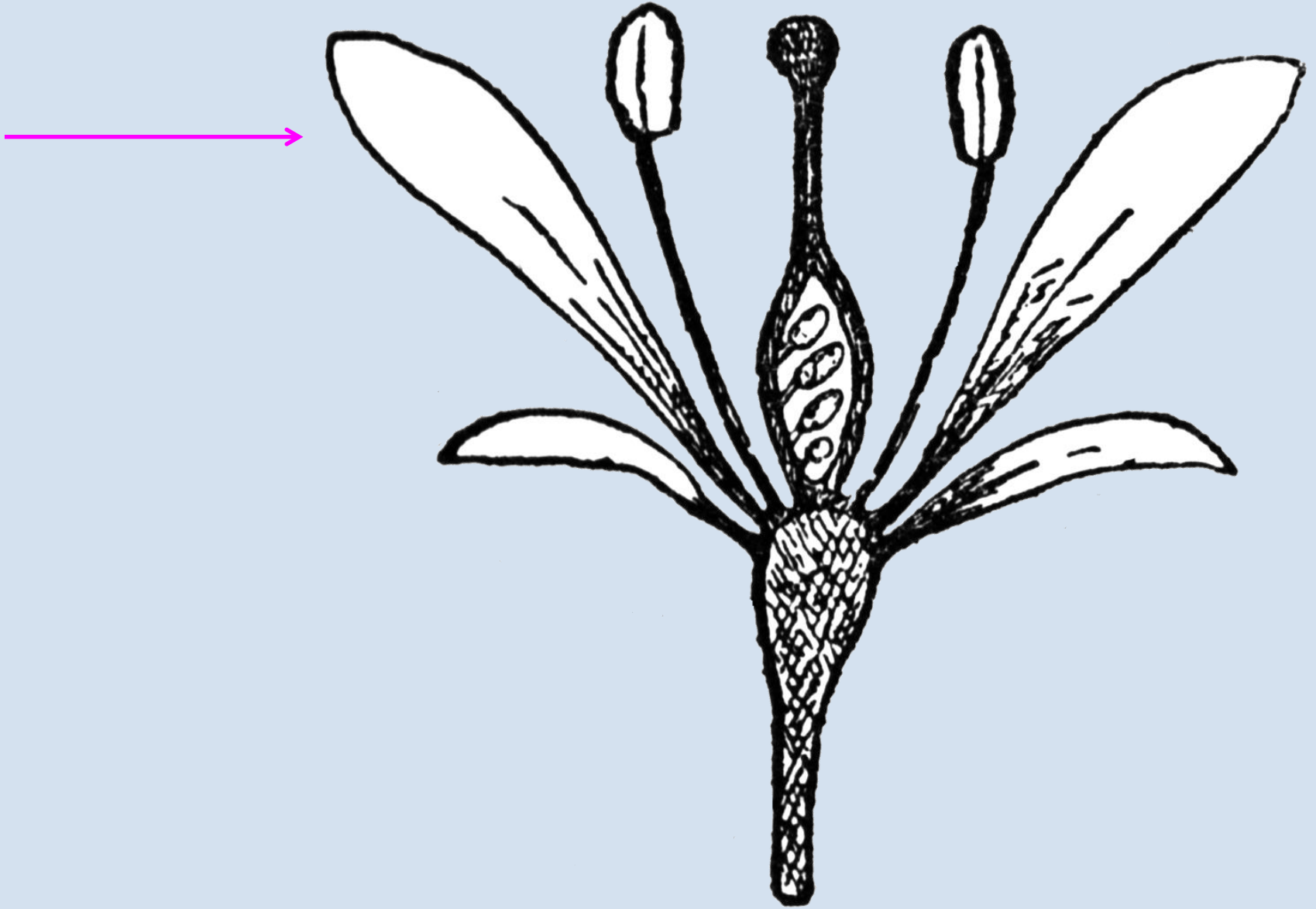


sepal (calyx) →

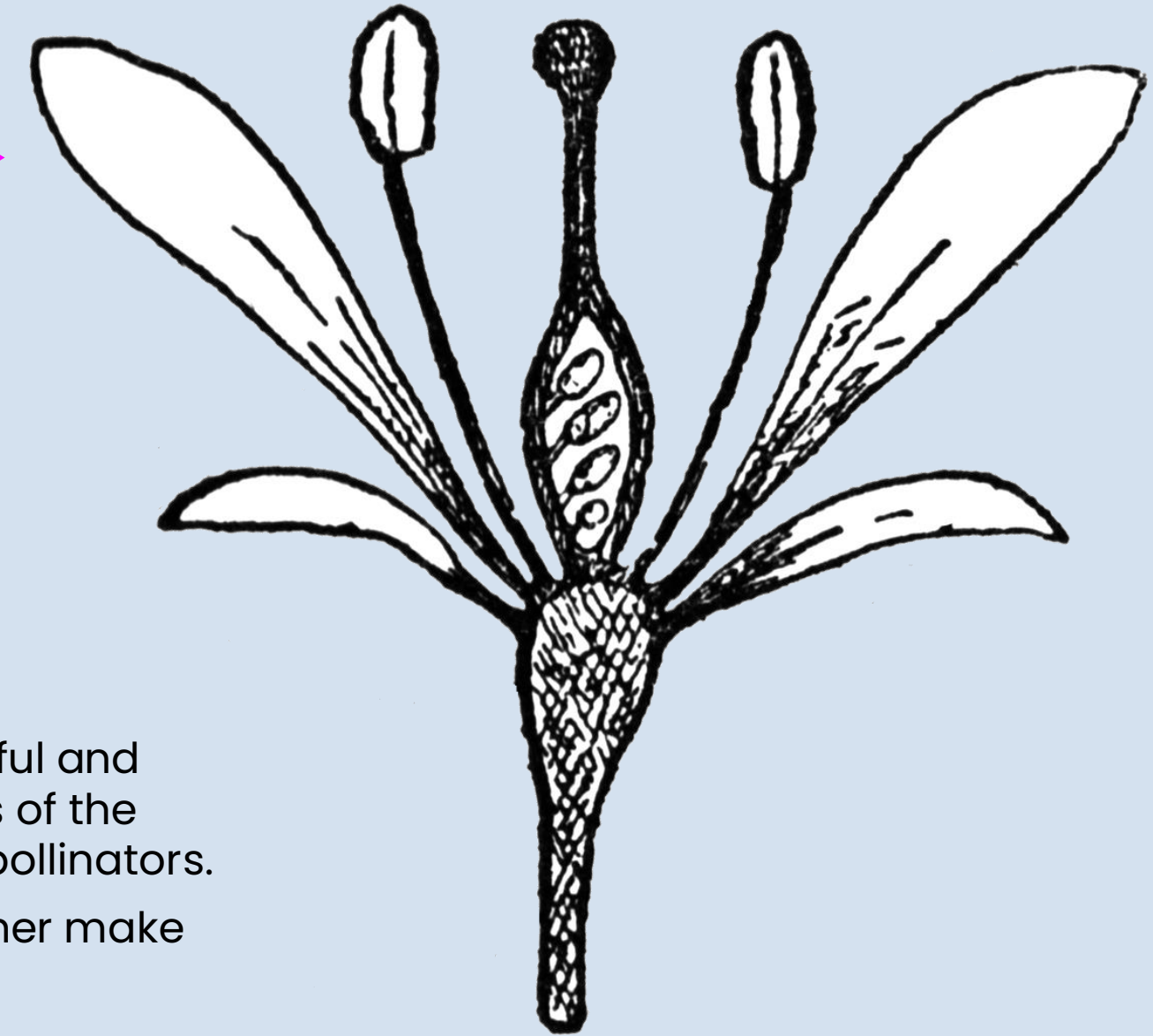


The **sepals** are the parts of a wildflower that look like little leaves or petals. They cover the outside of a flower bud to protect the flower until it opens or blooms.

All the sepals together make up the **calyx**.

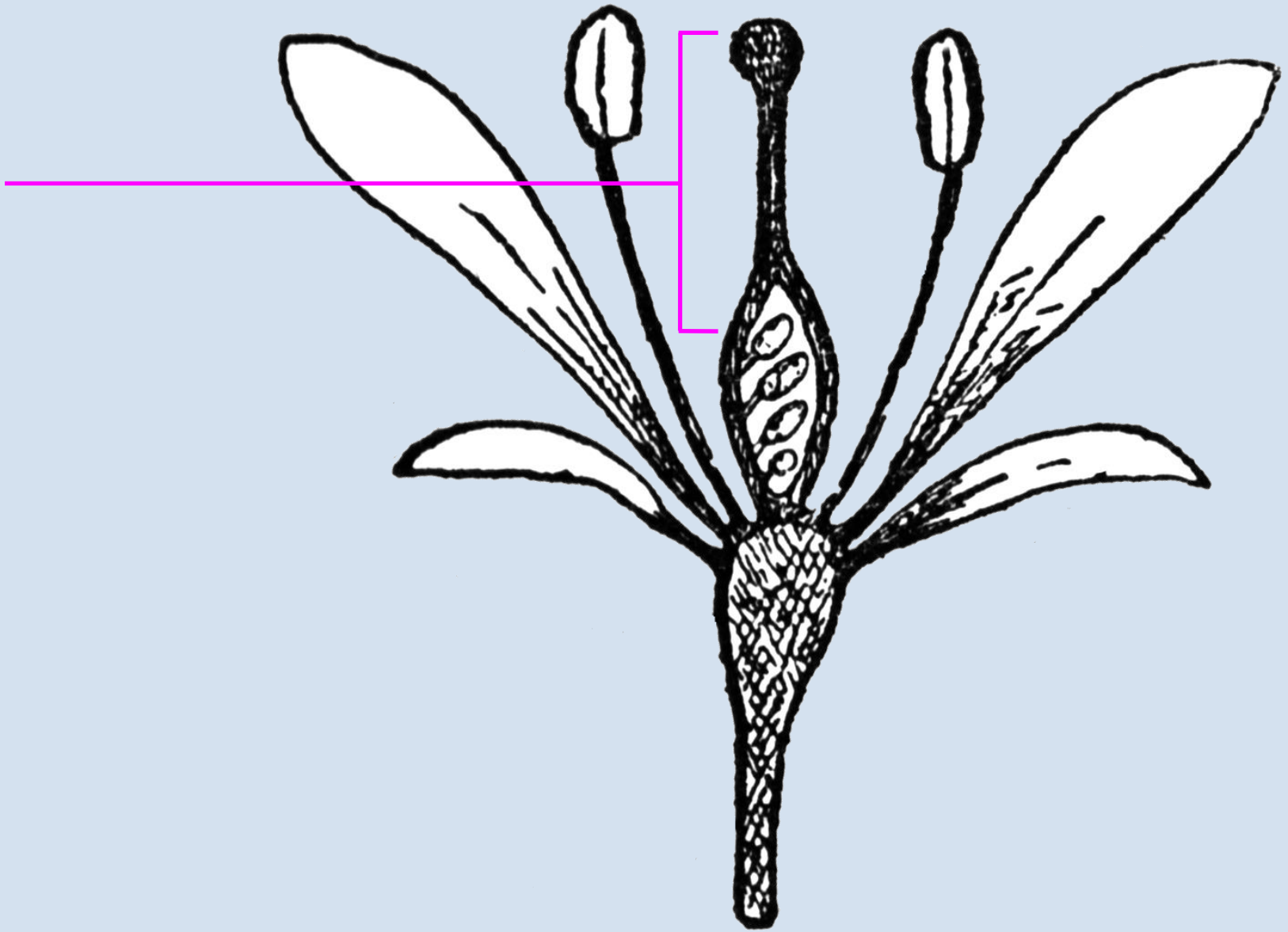


petal (corolla)

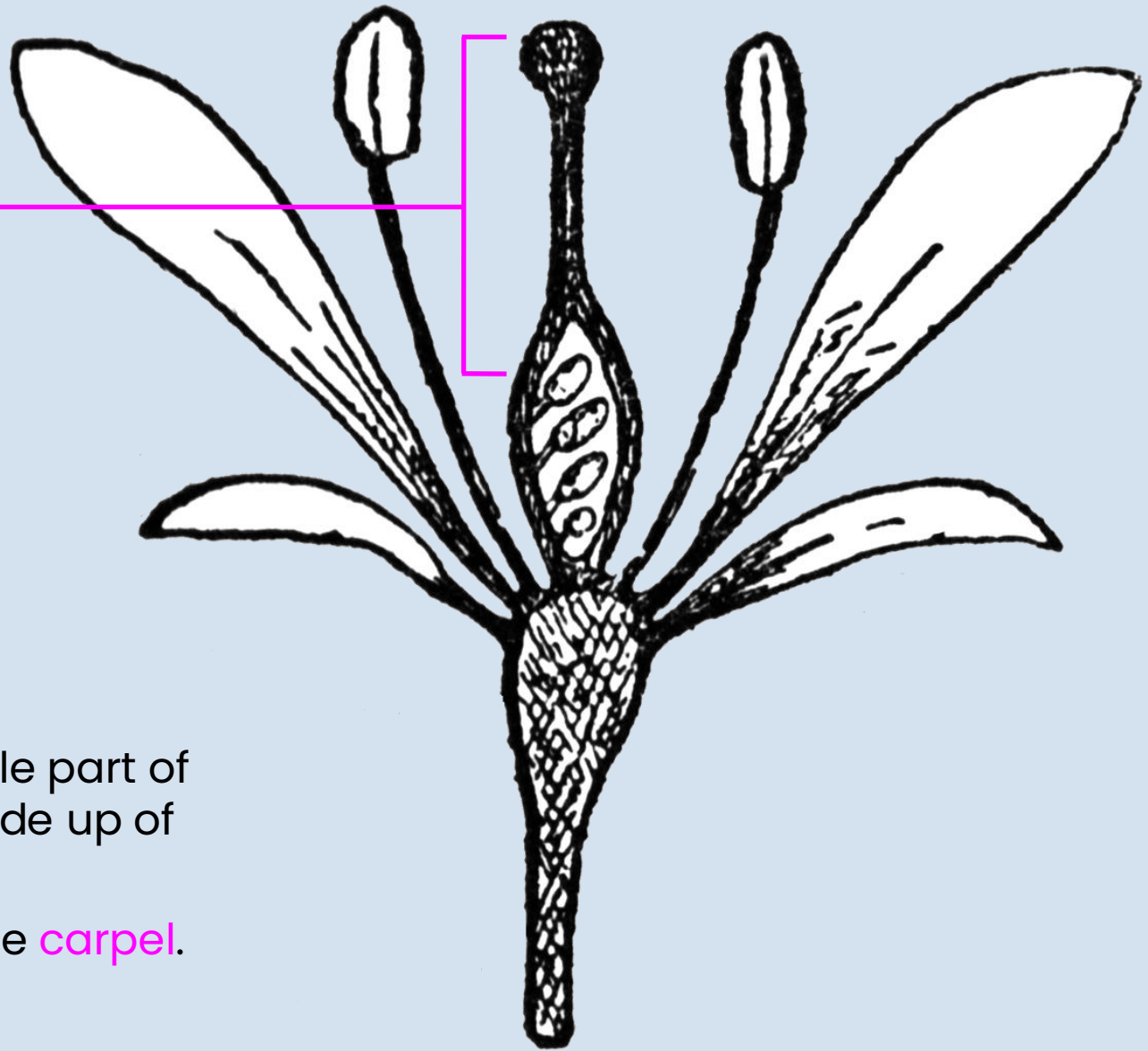


**Petals** are the colorful and often fragrant parts of the flower that attract pollinators.

All the petals together make up the **corolla**.

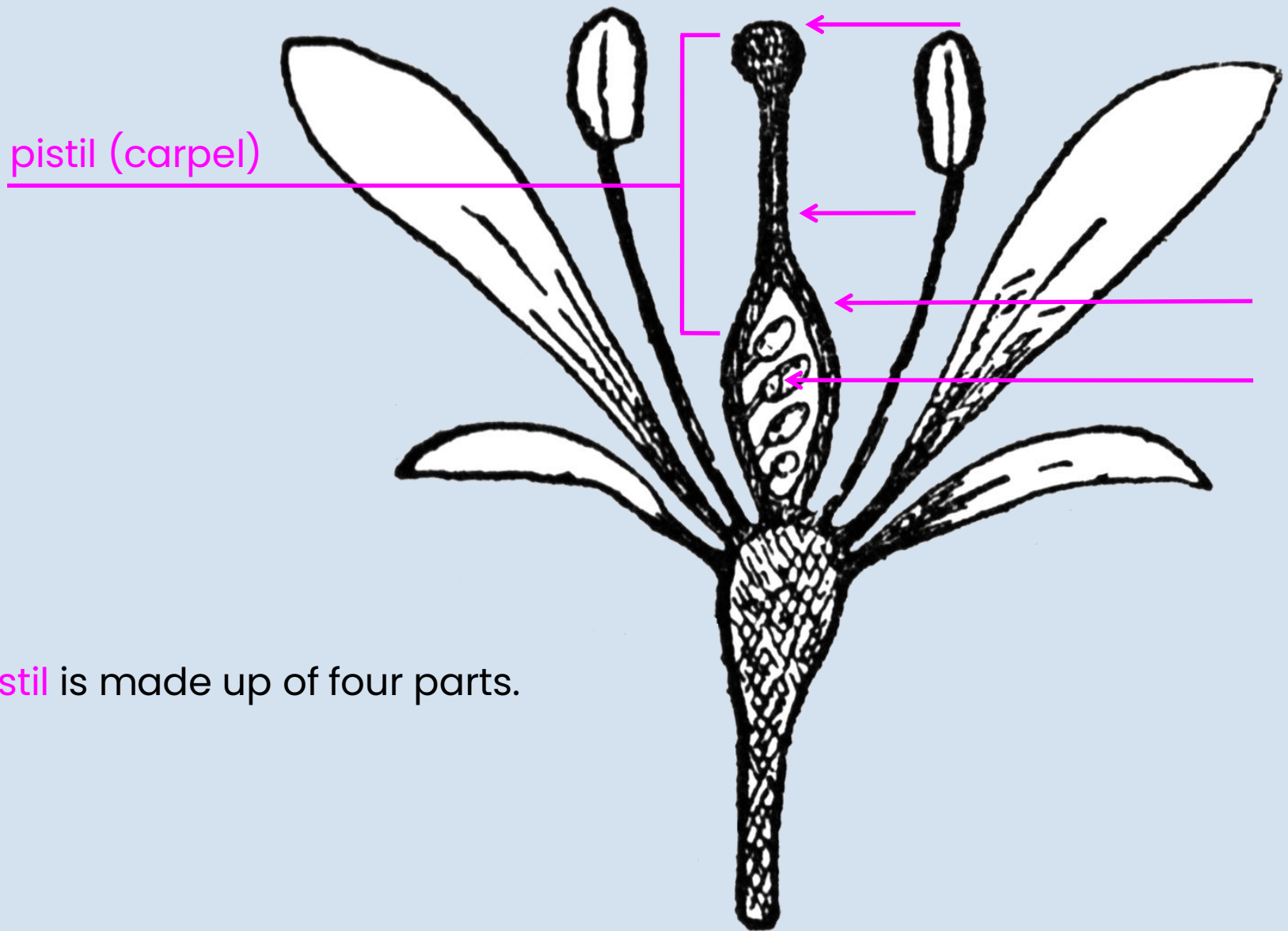


pistil (carpel)

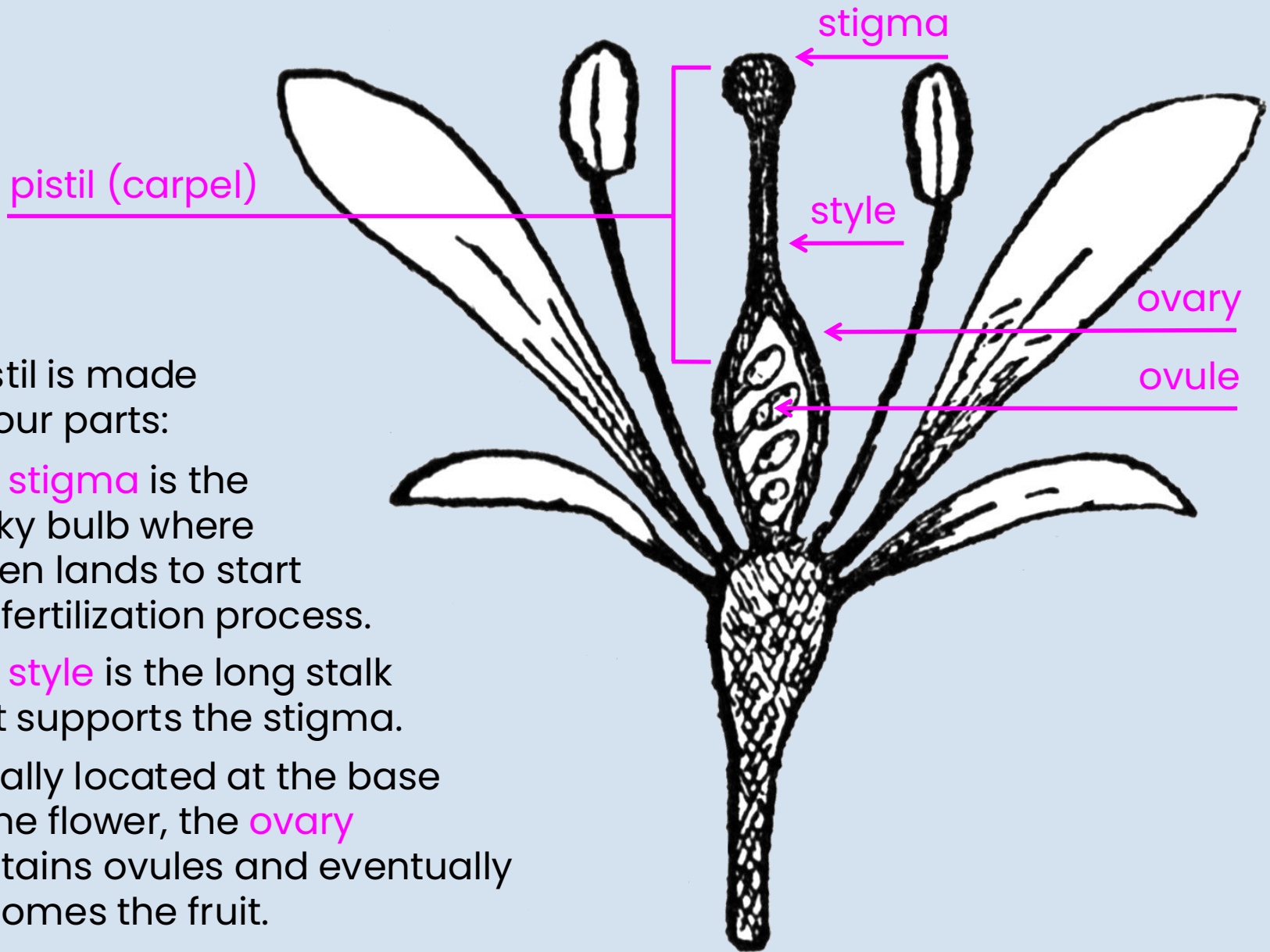


The **pistil** is the female part of the flower and is made up of four parts.

It is also known as the **carpel**.

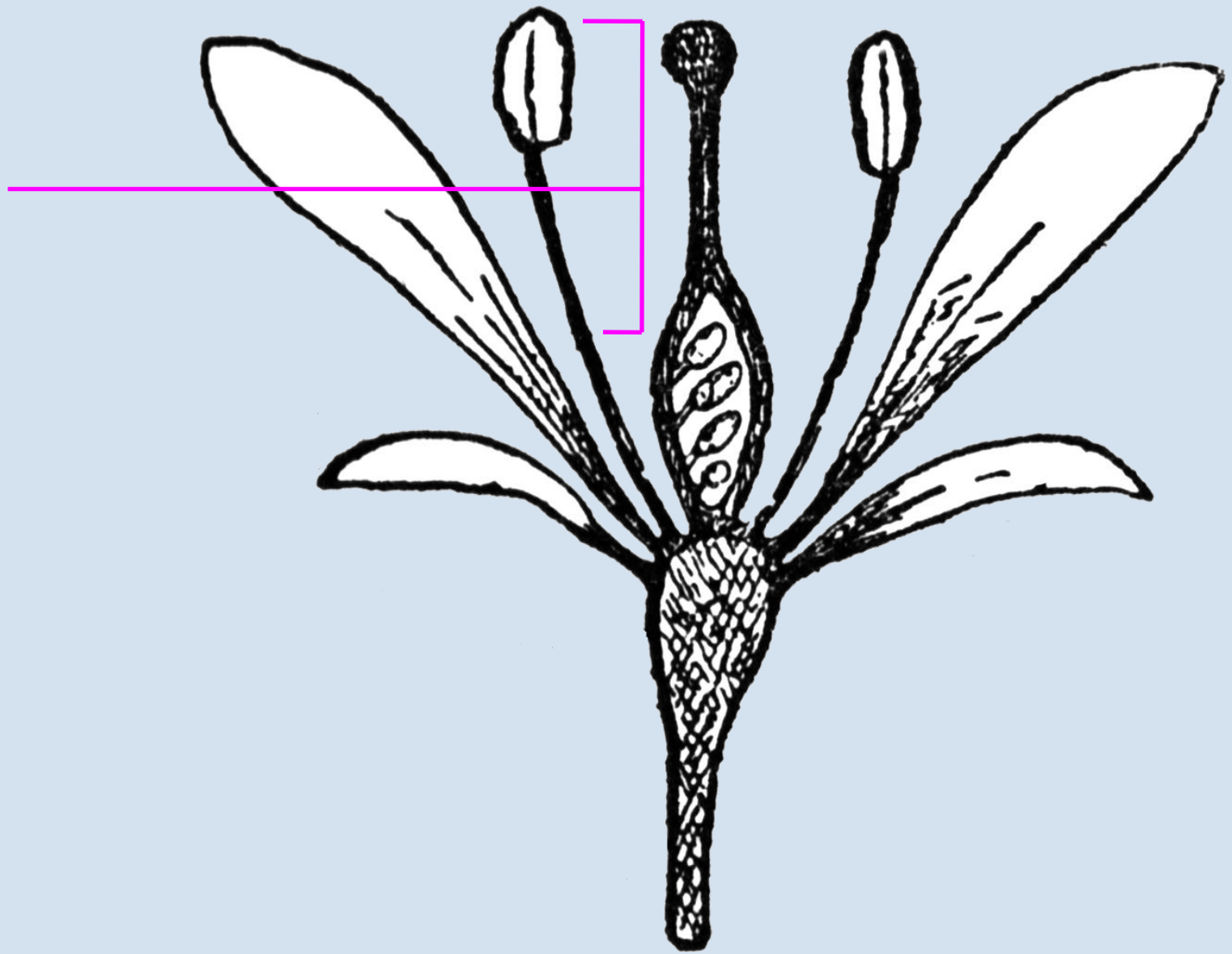


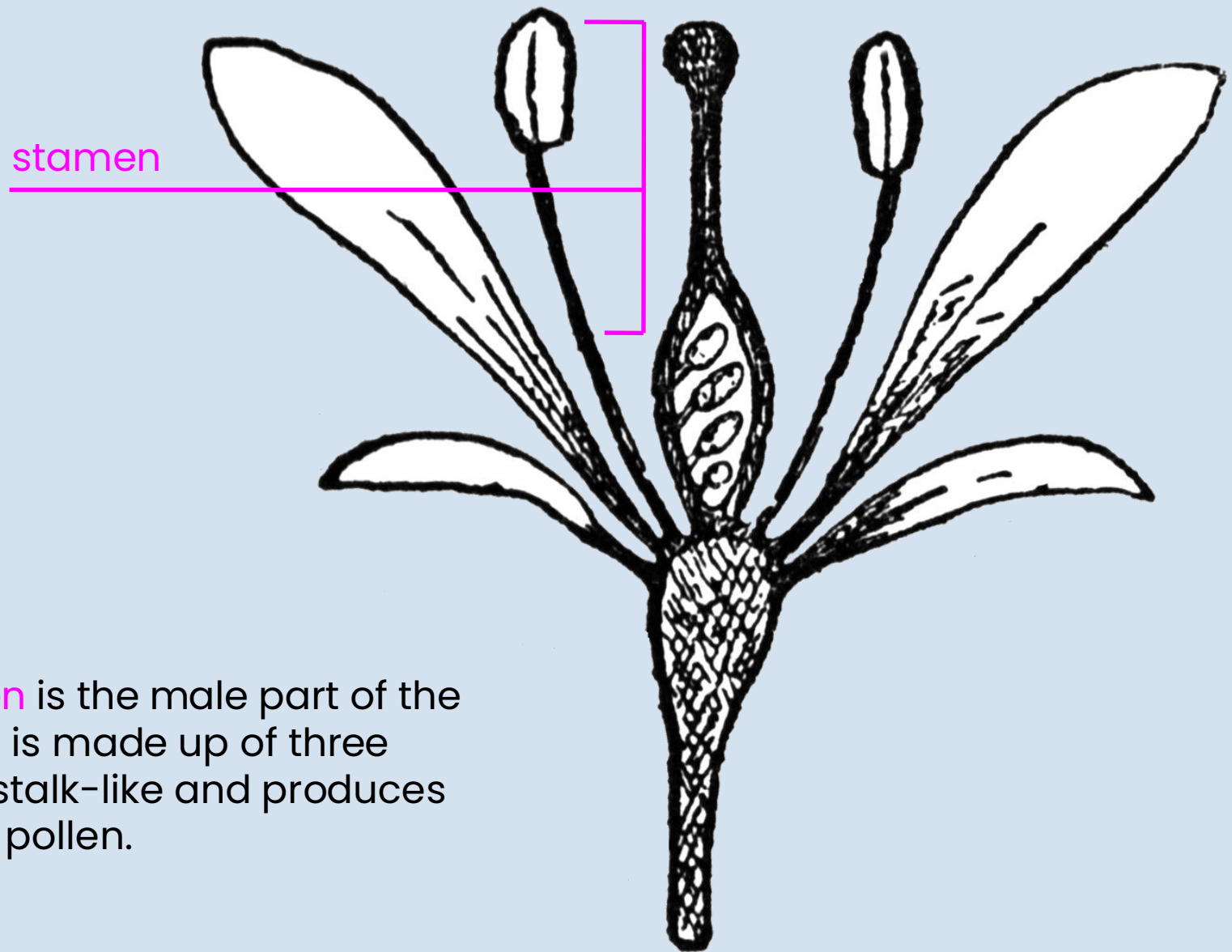
The **pistil** is made up of four parts.



The pistil is made up of four parts:

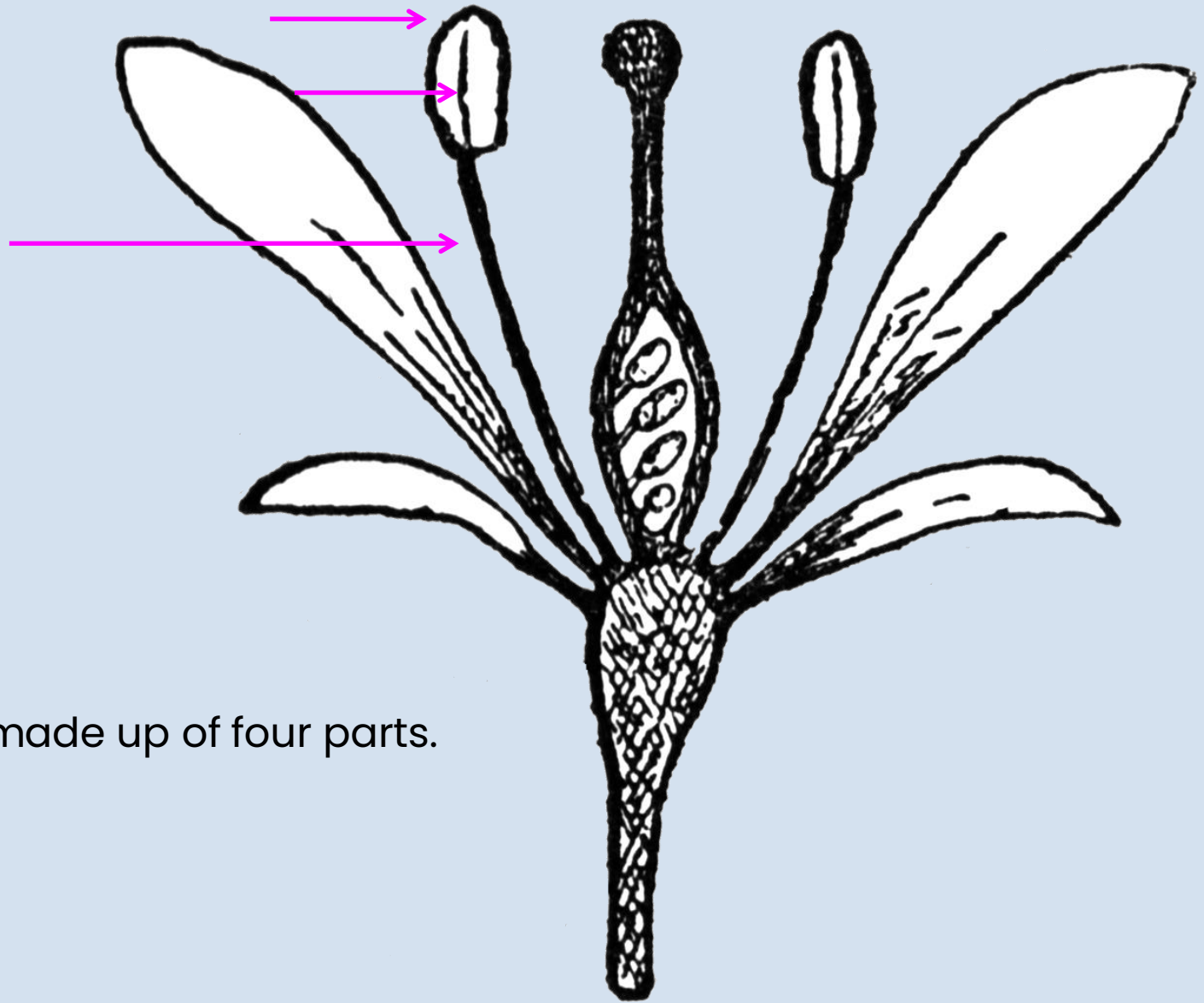
1. The **stigma** is the sticky bulb where pollen lands to start the fertilization process.
2. The **style** is the long stalk that supports the stigma.
3. Usually located at the base of the flower, the **ovary** contains ovules and eventually becomes the fruit.
4. After fertilization, the **ovules** become the seeds.



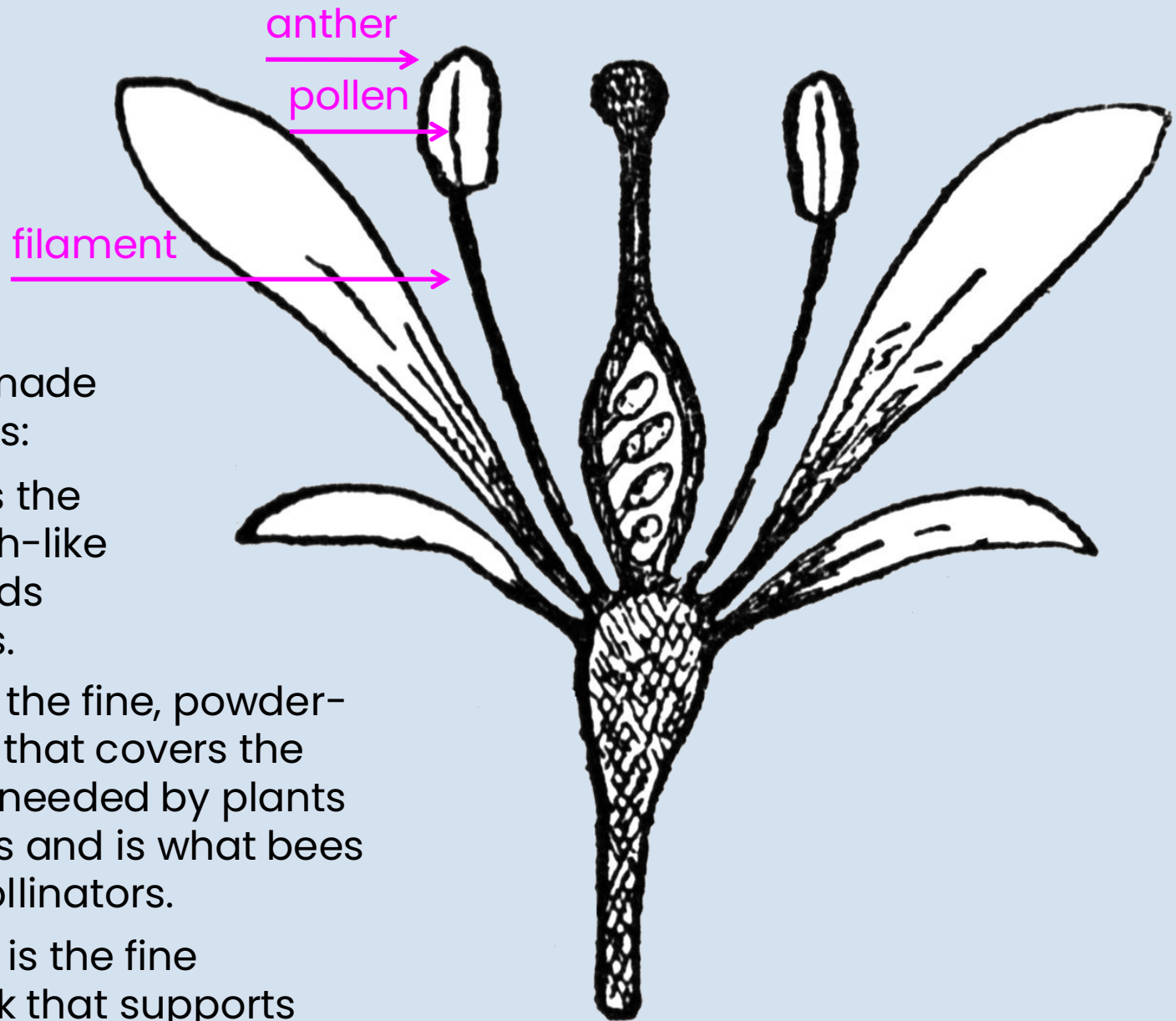


stamen

The **stamen** is the male part of the flower and is made up of three parts. It is stalk-like and produces and bears pollen.



The **stamen** is made up of four parts.



The stamen is made up of three parts:

1. The **anther** is the yellow, pouch-like part that holds pollen grains.
2. The **pollen** is the fine, powder-like material that covers the anthers. It is needed by plants to make seeds and is what bees and other pollinators.
3. The **filament** is the fine hair-like stalk that supports the anther.

