

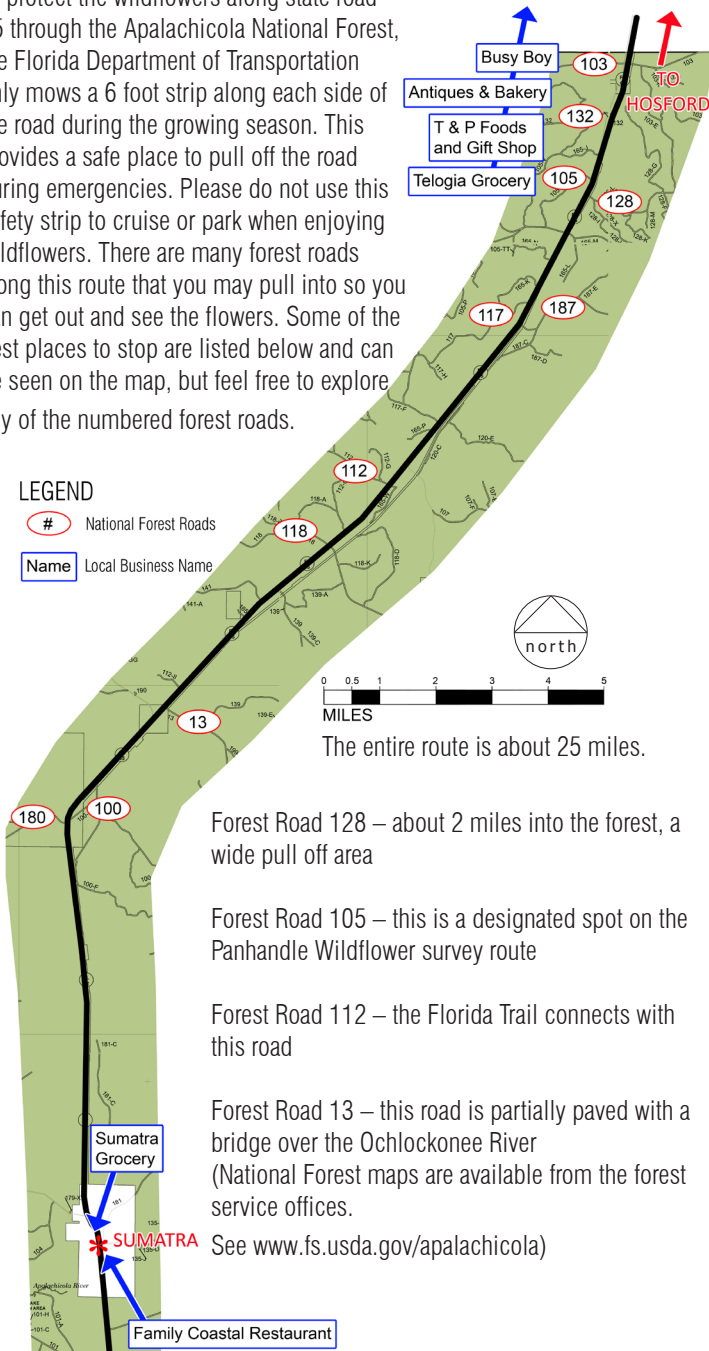
# Liberty County Spring Wildflower Self-Guided Tour on State Road 65

To protect the wildflowers along state road 65 through the Apalachicola National Forest, the Florida Department of Transportation only mows a 6 foot strip along each side of the road during the growing season. This provides a safe place to pull off the road during emergencies. Please do not use this safety strip to cruise or park when enjoying wildflowers. There are many forest roads along this route that you may pull into so you can get out and see the flowers. Some of the best places to stop are listed below and can be seen on the map, but feel free to explore any of the numbered forest roads.

## LEGEND

# National Forest Roads

Name Local Business Name



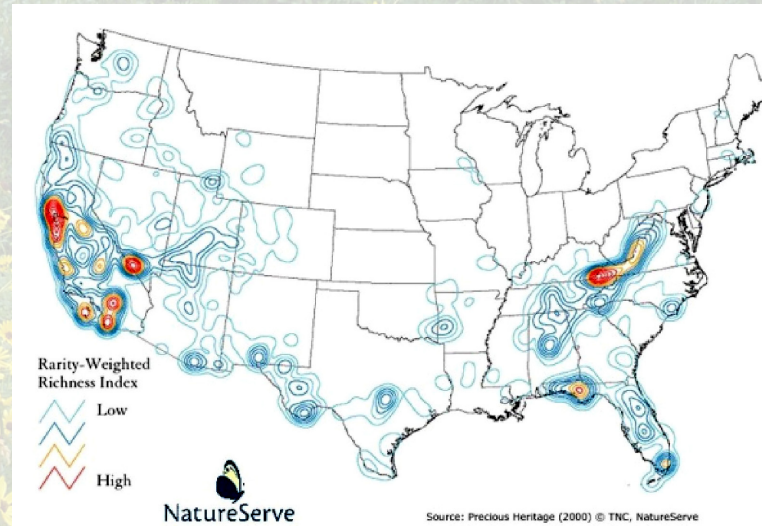
Forest Road 128 – about 2 miles into the forest, a wide pull off area

Forest Road 105 – this is a designated spot on the Panhandle Wildflower survey route

Forest Road 112 – the Florida Trail connects with this road

Forest Road 13 – this road is partially paved with a bridge over the Ochlockonee River (National Forest maps are available from the forest service offices.

See [www.fs.usda.gov/apalachicola](http://www.fs.usda.gov/apalachicola)



A national “hotspot” for biodiversity.

As you travel the route, please visit the businesses along this road so wildflowers can support the local economy as well. You can begin with coffee, a sausage or honey biscuit at Busy Boy convenience store at the NW corner of SR 20 and SR 65, where you will turn south to begin the tour route on SR 65. Visit Erma Jean and Gloria Jean at Hosford's Antiques & Bakery shop for food and gifts. If you want a hardy breakfast, stop at T and P Foods and Gifts on the west side of the road just past Telogia Creek; be sure and visit Pam's nice gift shop while you are there. Telogia Grocery, on the east side of the road at the junction with CR 67, is a good place to get supplies from Susie. As you near the end of this route, at the intersection of SR 65 and CR 379 (that goes north through the forest towards Bristol) you will find Sumatra Grocery where you can get an energy snack if you are continuing on beyond Sumatra. If you are ready for lunch or an evening meal when you reach Sumatra, the Family Coastal Restaurant is a wonderful place to dine. Leave your wildflower “calling card” when you visit.

The Florida Wildflower Foundation 2010 Panhandle Wildflower Survey (funded through the sale of Florida wildflower license plates) can be found at <http://flawildflowers.org/research.php>. The self-guided tour described in this brochure goes through a section of the survey route.

Some good guide books available from local book stores and nurseries :

Atlantic Coastal Plain Wildflowers, Gil Nelson  
East Gulf Coastal Plain Wildflowers, Gil Nelson  
The Guide to Florida Wildflowers, Walter Kingsley Taylor

You may also see more about the common spring flowers seen on this tour at [www.flickr.com/photos/wildflowersflorida](http://www.flickr.com/photos/wildflowersflorida) - Click icon titled “Spring on SR 65” to right of screen.

There is a wide variety of amazing wildflowers that grow along this route. We are so fortunate to have this national treasure in our backyard.

This self-guided tour will take you from the town of Hosford on SR 20 down through the Apalachicola National Forest on state road 65, through Telogia, and on to Sumatra. (or vice versa).



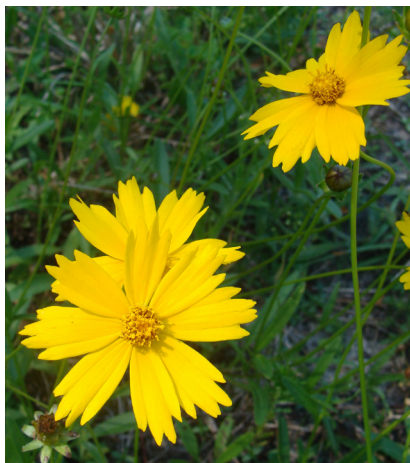
# Common Spring Wildflowers on State Road 65 in Liberty County

Below are some of the common flowers that you can check off as you find them on this self-guided tour on State Road 65 in the national forest.

You may see more about these flowers, as well as other spring wildflowers along this road, at [www.flickr.com/photos/wildflowersflorida](http://www.flickr.com/photos/wildflowersflorida) - Click icon titled "Spring on SR 65" to right of screen.



☐ Colic Root  
(*Aletris lutea*)



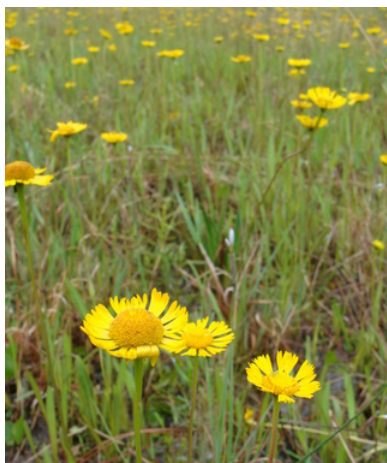
☐ Lanceleaf Coreopsis or Tickseed  
(*Coreopsis lanceolata*)



☐ Dewthread Sundew  
(*Drosera tracyii*)



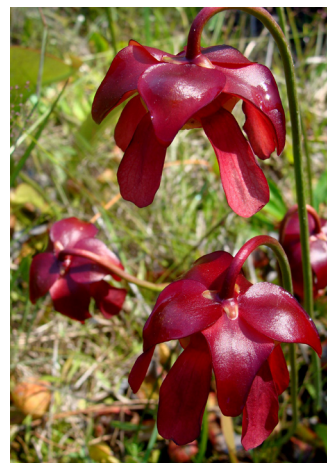
☐ Daisy Fleabane  
(*Erigeron vernus*)



☐ Spring Helenium  
(*Helenium vernale*)



☐ Candyroot  
(*Polygala lutea*)



☐ Parrot Pitcher Plant  
(*Sarracenia psittacina*)



☐ Rose Pitcher Plant  
(*Sarracenia rosea*)

This information was provided by the Magnolia Chapter of the Florida Native Plant Society <http://magnolia.fnpschapters.org/>

You may send your comments and suggestions to: [fnpsmagnoliach@gmail.com](mailto:fnpsmagnoliach@gmail.com).

NOTES:

\*Please remember that it is unlawful to pick or dig plants in the national forest.